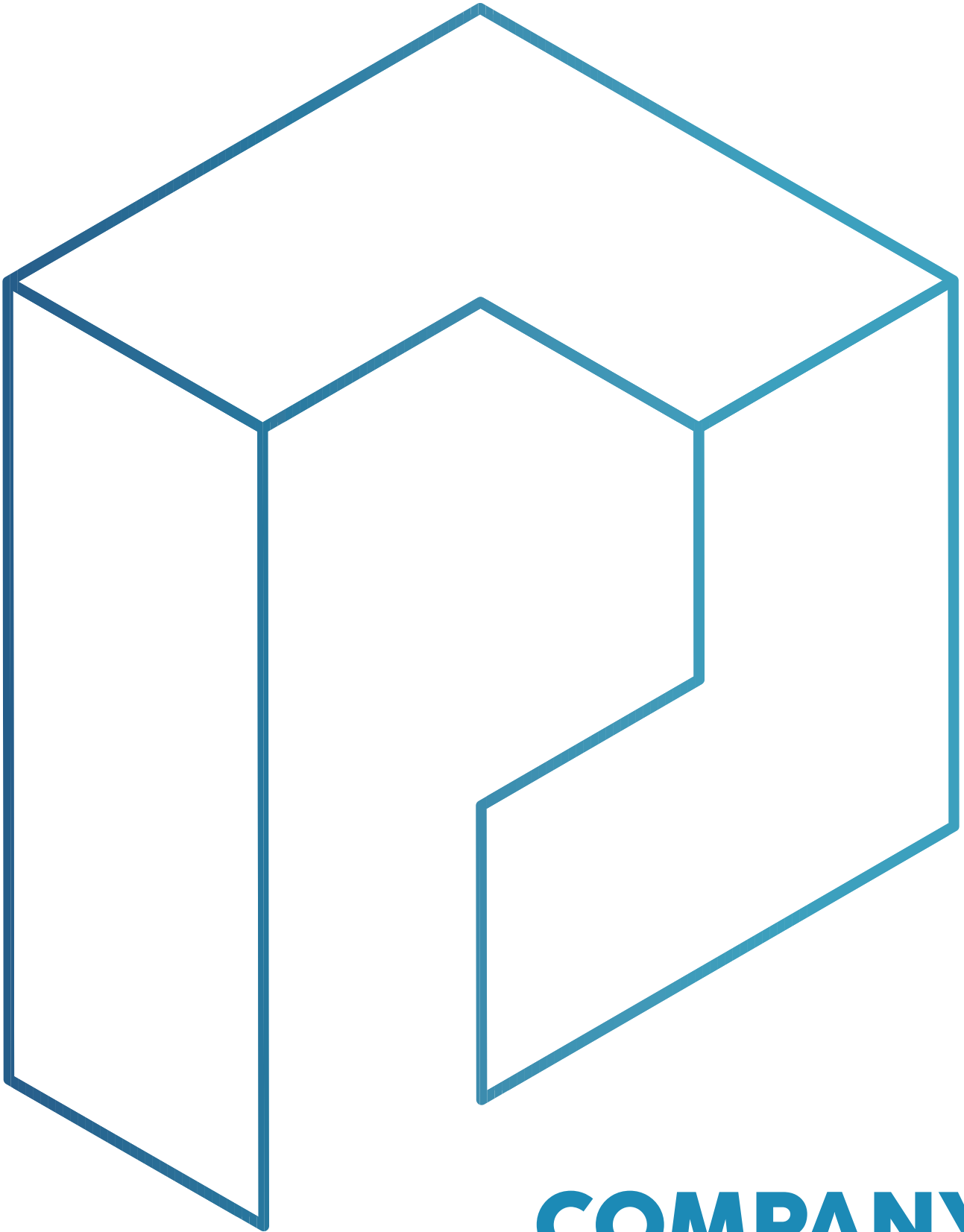




OPTI
PROJECTS

2025

Innovative Energy Infrastructure Solutions



COMPANY PROFILE

www.optiprojects.co.za
energize@optiprojects.co.za

Delivering Energy Infrastructure

OptiProjects (Pty) Ltd, a proud subsidiary of Kulani Energy, is a fully-fledged Engineering, Procurement, and Construction (EPC) contractor with a proven legacy in delivering world-class infrastructure solutions. Backed by more than two decades of expertise and certified excellence in renewable energy, electricity transmission lines and distribution (including overhead transmission lines, electrical substations and fibre optic networks), electrical reticulation and electrical networks and the refurbishment and maintenance thereof. OptiProjects stands as a trusted partner in advancing Africa's renewable energy future.

Originally founded in 2001 as OptiPower, the company established a strong reputation for quality, reliability, and innovation in power infrastructure. Its acquisition by Murray & Roberts in 2019 marked a new era of expansion, driving the successful execution of major projects within the renewable energy sector and solidifying its position as an industry leader.

In 2025, following Murray & Roberts' entry into business rescue, Kulani Energy strategically acquired the entity, along with its valuable track record, accreditations, and experienced team.



This acquisition gave rise to OptiProjects (Pty) Ltd, a renewed and re-energized force focused on delivering sustainable infrastructure solutions across the continent.

We offer in-house engineering to design turnkey and specialised solutions for high, medium and low voltage power lines; high and medium voltage substations; overhead and underground optic fibre lines and renewable energy projects.

OptiProjects delivers complete engineering, procurement and construction solutions across the project life cycle. We engineer to construct and construct to operate, optimising safety, productivity and cost across every phase of the project.

FIT FOR PURPOSE DESIGN



- Safety
- Reliability
- Availability
- Value Maximisation



Concept



Operational Readiness



Handover

EXECUTION EXCELLENCE



- Safety
- Productivity
- Cost
- Quality



Detailed Design



Operations



Comissioning

MAXIMUM ASSET VALUE



- Safety
- Reliability
- Performance
- Availability



Construction



Feed



Procurement

Capabilities



ENGINEERING

OptiProjects integrates concept, FEED and detail design engineering to define and optimise assets



PROCUREMENT

We focus on strategic sourcing, supplier optimisation and cost efficiency to support seamless project execution



CONSTRUCTION

Full turnkey EPC, Design & Construct and construction only projects



OPERATIONS

Asset operations, maintenance and optimisation solutions

- Turnkey EPC contractor for photovoltaic solar project developments
- Turnkey Balance of Plant contractor for wind project developments
- Execution contractor for HV, MV & LV electrical balance of plant for generation plants, BESS, utility & private industrial/commercial electrical infrastructure
- Construction of MV & HV Power Lines (Distribution & Transmission)
- Construction of MV & HV Substations (Distribution & Transmission)
- Construction of Overhead & Underground Fibre Optic networks including testing & fault finding (OPGW, ADSS)
- Assist in Design of Fibre Optic on existing Power lines (OP GW & ADSS)
- Assessments, Refurbishment & Maintenance of MV and HV Power Lines (Distribution & Transmission)
- Assessments, Refurbishment of MV & HV Substations (Distribution & Transmission)
- Demolishing of existing HV Substations & Power Lines
- MV Reticulation Networks

Sustainability

CLIMATE CHANGE AND THE ENVIRONMENT

The biggest contribution that OptiProjectst can make to a lower carbon economy is to ensure that it has the capability to design, procure, construct, maintain and operate infrastructure that supports environmental improvement, and to assist our clients in achieving their environmental objectives. Second to that, is the continual pursuit of opportunities to minimise the direct im pact of our business activities on the environment. All our operations are required to adopt high environmental management standards, including implementing and maintaining internationally recognised environmental management systems, using project input materials responsibly and efficiently, and complying with legislative requirements.

SAFETY

We recognise that safety is a managed outcome and have set ourselves a goal of Zero Harm. The company's HSE Framework drives a consistent safety culture. It focuses on high-impact interventions such as managing critical safety risks and the risk of change that can affect safety outcomes. Key to continually improving our safety performance are effective leadership, streamlined systems, clear goals and operational discipline. Supporting mechanisms include keeping abreast of health and safety developments; benchmarking our performance against that of our clients, peers and joint-venture partners; periodically reviewing our systems and processes; and the sharing of knowledge and experiences.

GOVERNANCE AND REPUTATION

A high standard of corporate governance has been instilled within OptiProjects. We gain competitive differentiation in how we execute projects that are safe, efficient, and of high quality while considering environmental impacts; in our approach as an employer in all our markets; and in how we behave as a corporate citizen with international and local responsibilities. Our Values, Statement of Business Principles and Code of Conduct guide employees in the pursuit of the Company's strategic and business objectives. Engineered Excellence is our operating philosophy of planning in detail for the outcomes we want to achieve. To embrace Engineered Excellence, we must apply rigour and discipline in everything we do and remove chance from the objectives we seek.





COMPANY SUSTAINABILITY FRAMEWORK

Financial and Economic Sustainability



ENVIRONMENT

- Greenhouse gas emissions and climate change
- Resource efficiency, energy and water
- Waste and pollution
- Biodiversity and land
- Regulatory compliance



SOCIAL

- Safety, health and wellness
- Employee relations, diversity and inclusion
- Working conditions
- Human rights, dignity and equality
- Indigenous partnerships and socioeconomic development
- Community development



GOVERNANCE

- Governance structures
- Board diversity and composition
- Ethical conduct
- Risk and opportunity oversight
- Data protection and privacy
- Cybersecurity

Transparency and Integrated Reporting

STAKEHOLDER ENGAGEMENT

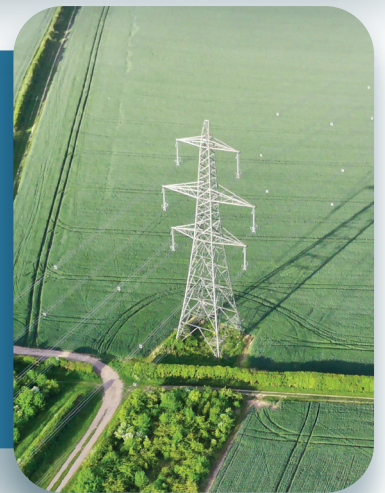


RENEWABLE ENERGY

- EBoP contractor for PV Solar and Wind Renewable Energy Projects
- Installation of Solar panels, and mounting infrastructure
- Upgrading of existing plants
- Refurbishment of existing plants
- Assessment and recommendations for improving quality of supply
- Quantity surveying

TRANSMISSION LINES

- Turnkey design and construction of all Power lines from 11k V up to 765kV
- Refurbishment of Lines
- Conductor replacement
- Insulator replacement
- Foundation refurbishment
- Steel Member replacement
- Guy Anchor Link Refurbishments and replacement
- Spacer Damper replacement

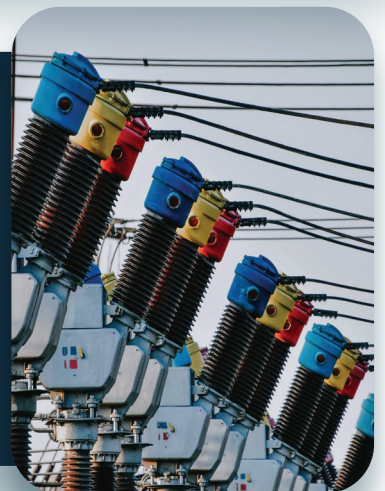


SUBSTATION

- Substation layout design
- Quantity surveying
- Turnkey construction of Substations from 11kV to 400kV.
- Upgrading of existing substations
- Refurbishment
- Assessment and recommendations for improving quality of supply
- SCADA design

FIBRE OPTIC

- Turnkey Installation of all Fibre Optic Types (Under Live line and outage conditions)
- Specialist Splicing and Testing
- Emergency repair work
- Fibre Optic design Work
- Equal Potential Plotting
- Fault locating
- Patching
- Assisting in the Commissioning of Fibre Optic network (with an approved specialist)



KULANI ENERGY

Our strength lies in our multidisciplinary team with proven experience in Project Development and Delivery, including Operations and Maintenance in fields of Electrical, Mechanical, Civil and Structural Engineering, Environmental Compliance and Environmental Social & Governance (“ESG”) across all sectors. Kulani Energy is a holding company with 5 delivery platforms:

Where OptiProjects fits into Kulani Energy




PROFESSIONAL SERVICES

Professional services in the form of independent platforms in Engineering, Environmental and Advisory (ESG & Finance).




PROJECT DEVELOPMENT

This platform fits in with our professional services experience. Kulani develops projects across sectors and technologies (external and in-house).



INVESTMENT

This platform is in line with our aggressive growth strategy. Acquisition of, and investment in entities that support our O&M vision.



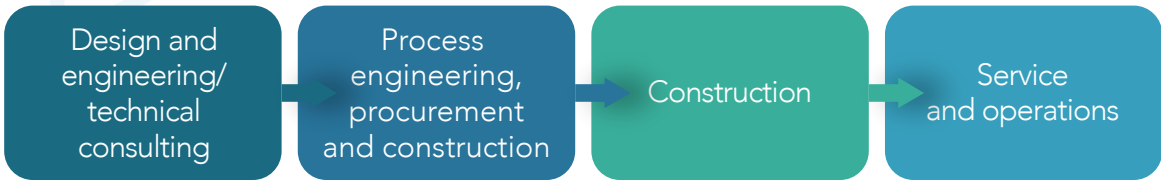
EPC

EPC platform focusing on EPC projects. A healthy pipeline from the REIPPP, private industrial and commercial sectors.




O&M

This is the goal for Kulani Energy: to be a leading operations and maintenance service provider across sectors and technologies.



Project Life Cycle



**SKA MeerKAT
EXT Project**

Installing Power and Fiber
Communication Reticulation

We are currently expanding
the SKA observatory, 100km
outside of Carnarvon, in a
radio silent zone of the Karoo.



**Golomoti Solar
Pv Project**

Electrical Works

Supply of Key Equipment
Works

Packages – Modules,
and/or – Inverters, and/or
– Single-axis Trackers



**Zeerust PV
Plant Project**

Supply, Construction
and Commissioning

Execution of turnkey project
(supply, construction and
commissioning) of 132kv
overhead line and elevating and
switching substation Recapital –
Kameeldorn (respectively) and
enlargement of Zeerust



**Motheo Copper
Mine 132KV Line**

Design, Manufacture, Supply,
Installation and Commissioning
of 15 Km, 132KV Powerline and
associated Transmission Works.

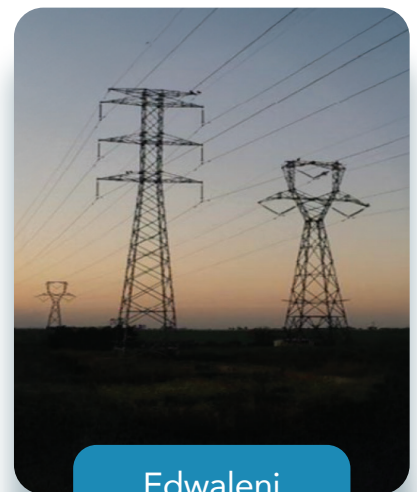
The Works includes design,
supply, construction and
commissioning



**84MW Wolf
Wind Farm**

EPC Balance of Plant – Early
Works Contract

Wind Farm Civil & Electrical
Balance of Plant design



**Edwaleni
Project**

Construction of Edwaleni II to
Stonehenge 132 kV Line and
Associated Substation Line
Feeder Bays

Website

www.optiprojects.co.za

Email

energize@optiprojects.co.za

Telephone

011 462 2022

Address

1 Protea Place, 2nd Floor
CHD Building, Fredman Drive,
Sandton, 2196, South Africa



**OPTI
PROJECTS**

